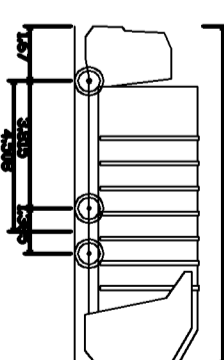
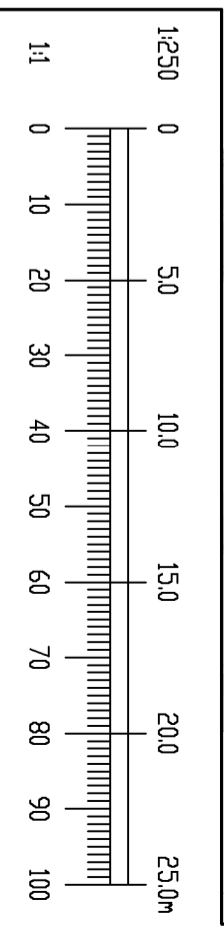


- NOTES:
1. DO NOT SCALE. USE FIGURED DIMENSIONS ONLY.
  2. THIS DRAWING IS TO BE READ IN CONJUNCTION WITH ALL OTHER RELEVANT ARCHITECTURAL AND ENGINEERING DRAWINGS.

**LEGEND:**



Project 2 Dwg. GR-12V with Elite 604 Chassis  
 Overall Length 3.50m  
 Overall Body Height 2.50m  
 Front Wheelbase 2.50m  
 Rear Wheelbase 2.50m  
 Max. Axle Spacing 5.00m  
 Max. 50 Curb Turning Radius 7.50m



REV / DATE	AMENDMENT	DRN / APPD

**STATUS**  
**FOR PLANNING ONLY**  
**NOT FOR CONSTRUCTION**

**Waterman Moylan**  
 Engineering Consultants  
 BLOCK 5, EASTPOINT BUSINESS PARK, ALIFE BYRNE ROAD,  
 DUBLIN D03 H9F4 IRELAND. Tel: (01) 664 8800  
 Email: info@waterman-moylan.ie www.waterman-moylan.ie

CLIENT **ATLAS GP LIMITED**  
 ARCHITECT **KC CAULEY DAVE O'CONNELL**  
 PROJECT **CARRANHILL ROAD SHD 2022**

TITLE **SWIPT PATH ANALYSIS - REFUSE VEHICLE**

DRAWN	DESIGNED	APPROVED	DATE
CB/mt	BMC	JG	AUG. '22
SCALE	JOB NO.	DRG. NO.	REVISION
1:250 @A1	21-18	P272	